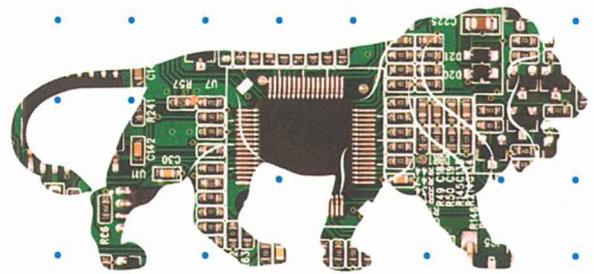
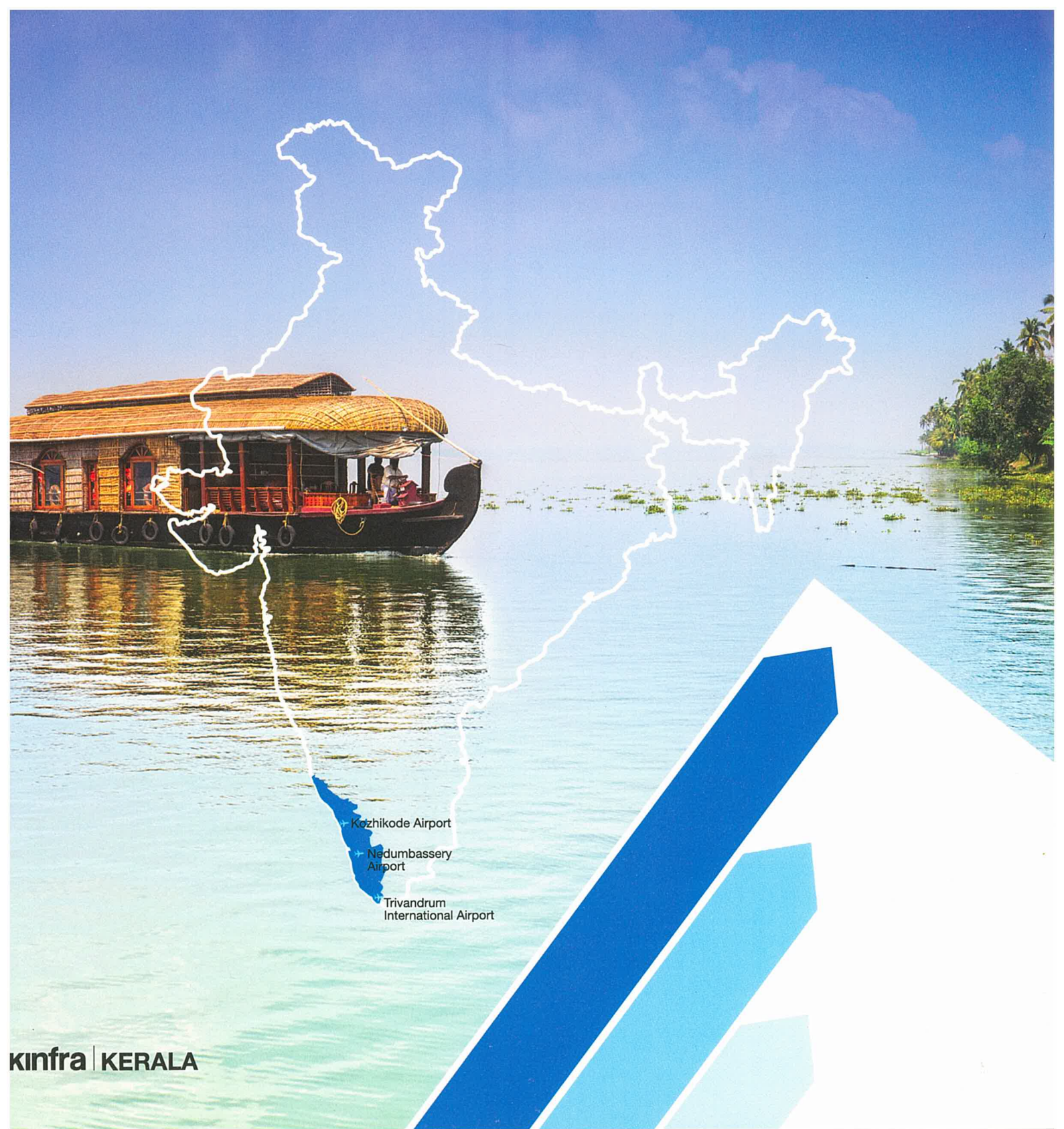




**THE NEW FACE OF
ELECTRONICS
MANUFACTURING
IN INDIA**



kinfra | KERALA



Kozhikode Airport
Nedumbassery Airport
Trivandrum International Airport

kinfra | KERALA



THE LAND OF OPPORTUNITIES

KERALA

Situated on the south-western coast of India, known the world over as God's Own Country, Kerala is one of the world's favourite tourist destinations.

With a Human Development Index (HDI) on par with some of the world's most developed countries, Kerala is one of the most urbanized states in India and has recorded a growth rate of 6.49% in the last fiscal, which is above the national average of 4.04%.

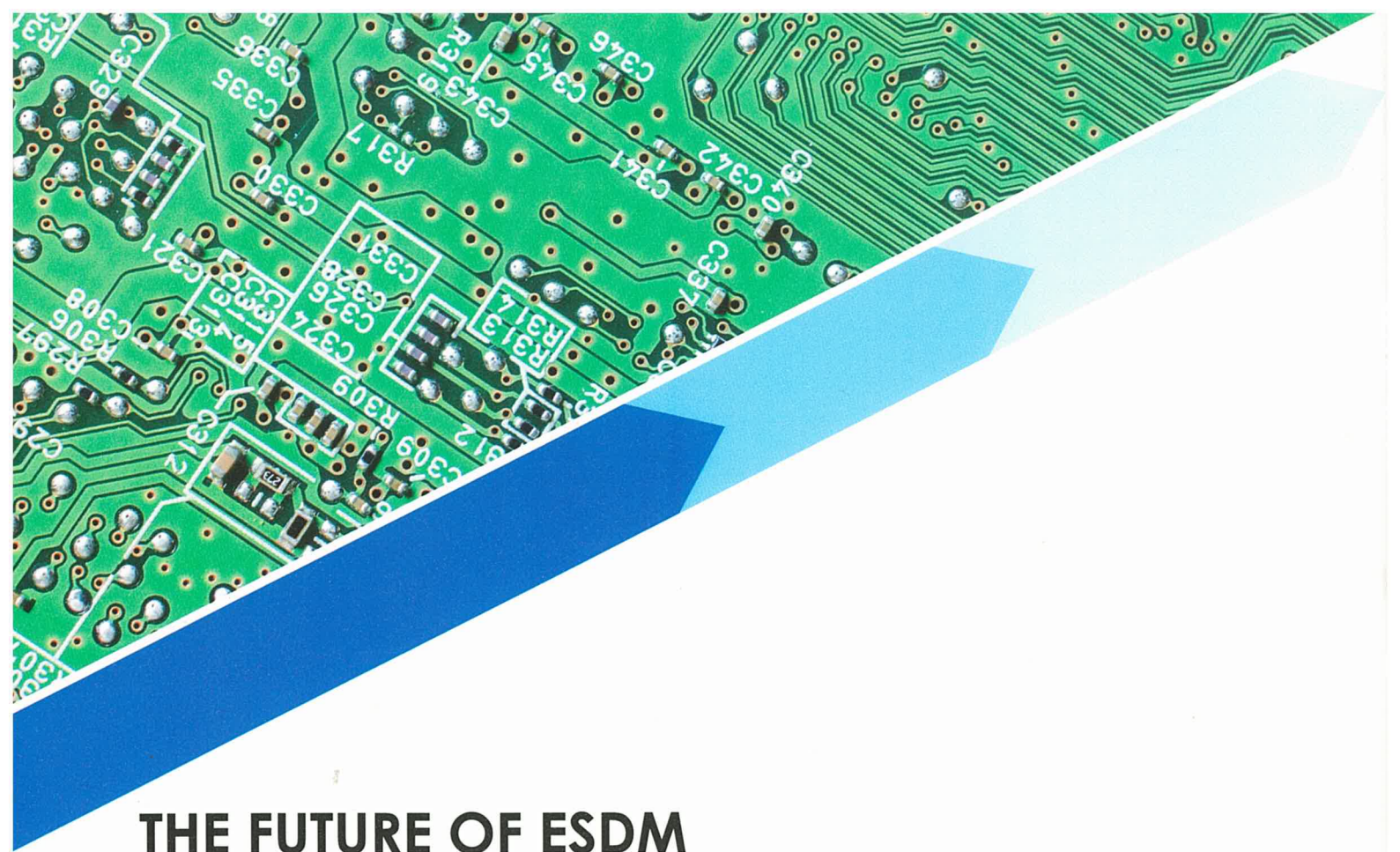
Kerala has the highest electronic goods consumption among all Indian states. In fact, India's first electronics manufacturing company KELTRON was founded in Kerala.

Kerala has today emerged as the perfect place for Electronics System Design and Manufacturing (ESDM). The Government of Kerala with the support of the Government of India and Department of Electronics and Information Technology (DeitY) is making every effort to make Kerala a leading electronics manufacturing hub.

Kerala **100%** literate
digital



kinfra | **KERALA**



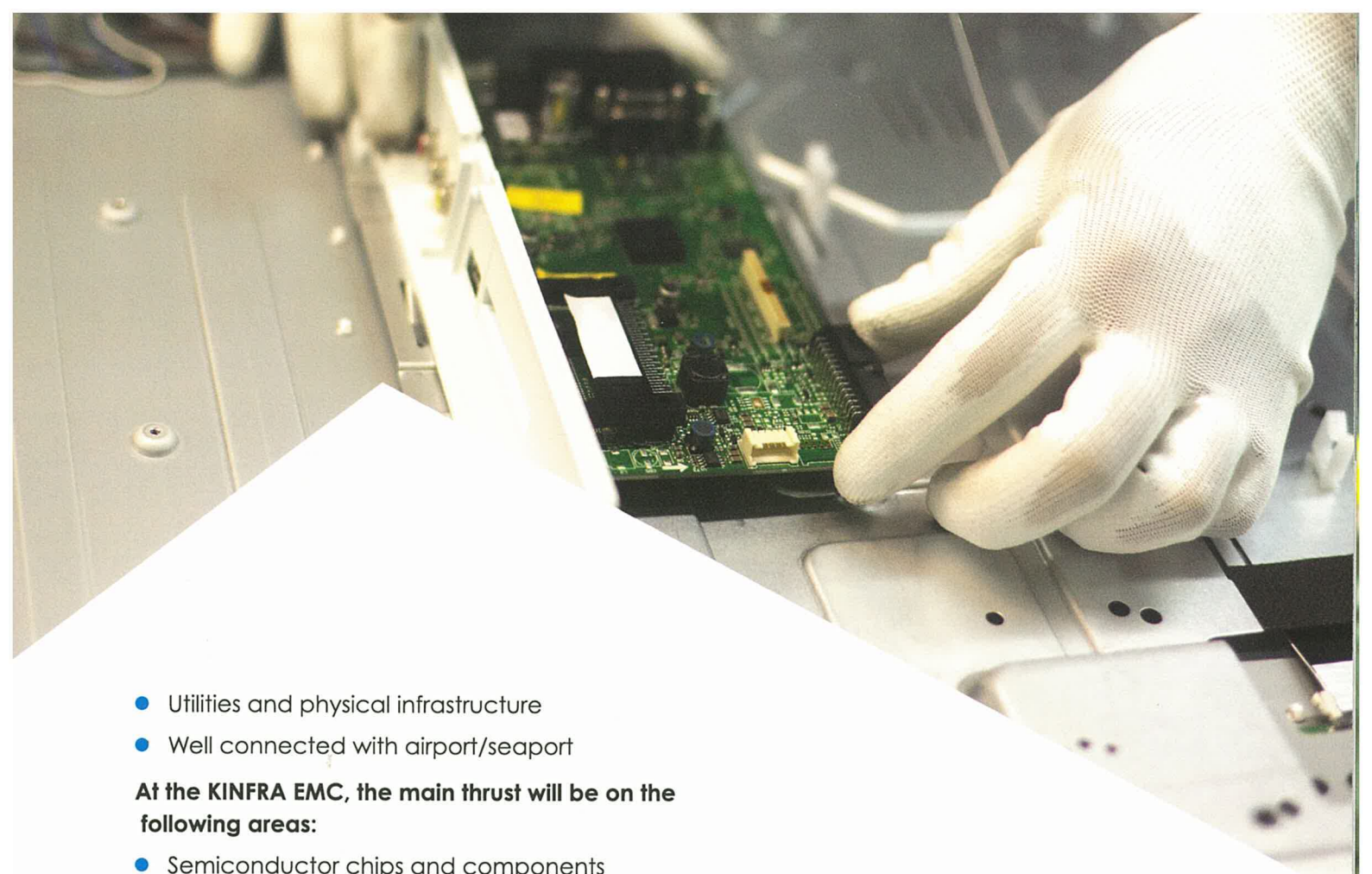
THE FUTURE OF ESDM

KINFRA GREENFIELD ELECTRONICS MANUFACTURING CLUSTER (EMC)

KINFRA Greenfield Electronic Manufacturing Cluster is being developed under the new National Electronics Policy 2012, formulated by the Government of India. For this, KINFRA has identified 66.87 acres of land at Kakkanad, the IT hub of Kochi.

The planned integrated infrastructure facility will offer 1,42,000 sq. ft. of built-up space with 'Plug n Play' facility for the Electronics Systems Design and Manufacturing (ESDM) and feature facilities like:

- Processing Zone – Industrial plots, manufacturing and support facilities complex and tool room
- Non-processing Zone – Residential and commercial plots

- 
- Utilities and physical infrastructure
 - Well connected with airport/seaport

At the KINFRA EMC, the main thrust will be on the following areas:

- Semiconductor chips and components
- Fabs for ESDM products
- Power supply for ESDM products
- Semiconductor wafering
- Solar photovoltaics
- Optoelectronics
- Nanoelectronics
- LEDs/LCDs
- Avionics
- Consumer electronics

THE FIRST CHOICE FOR EMC

KAKKANAD

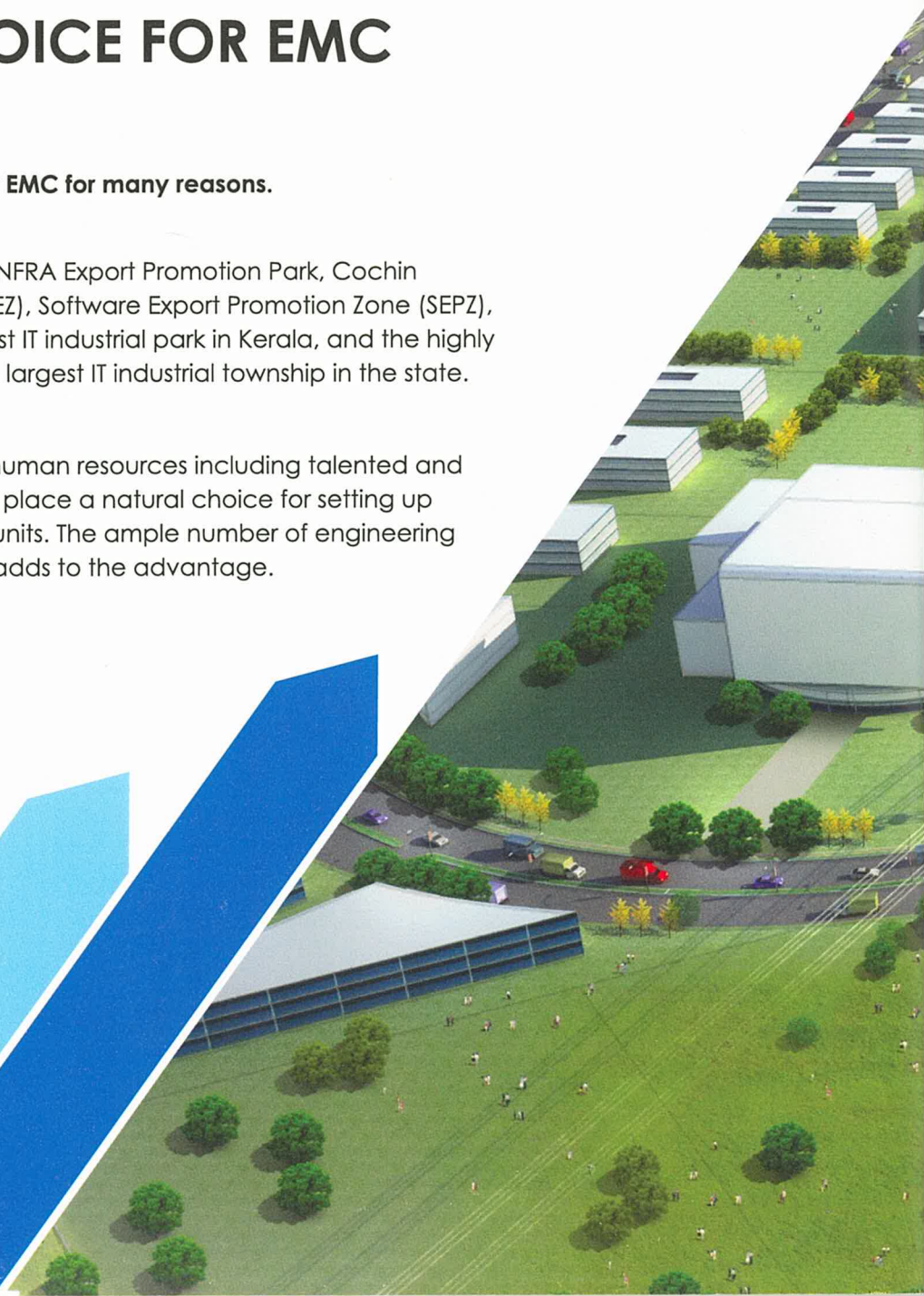
Kakkanad is the first choice for EMC for many reasons.

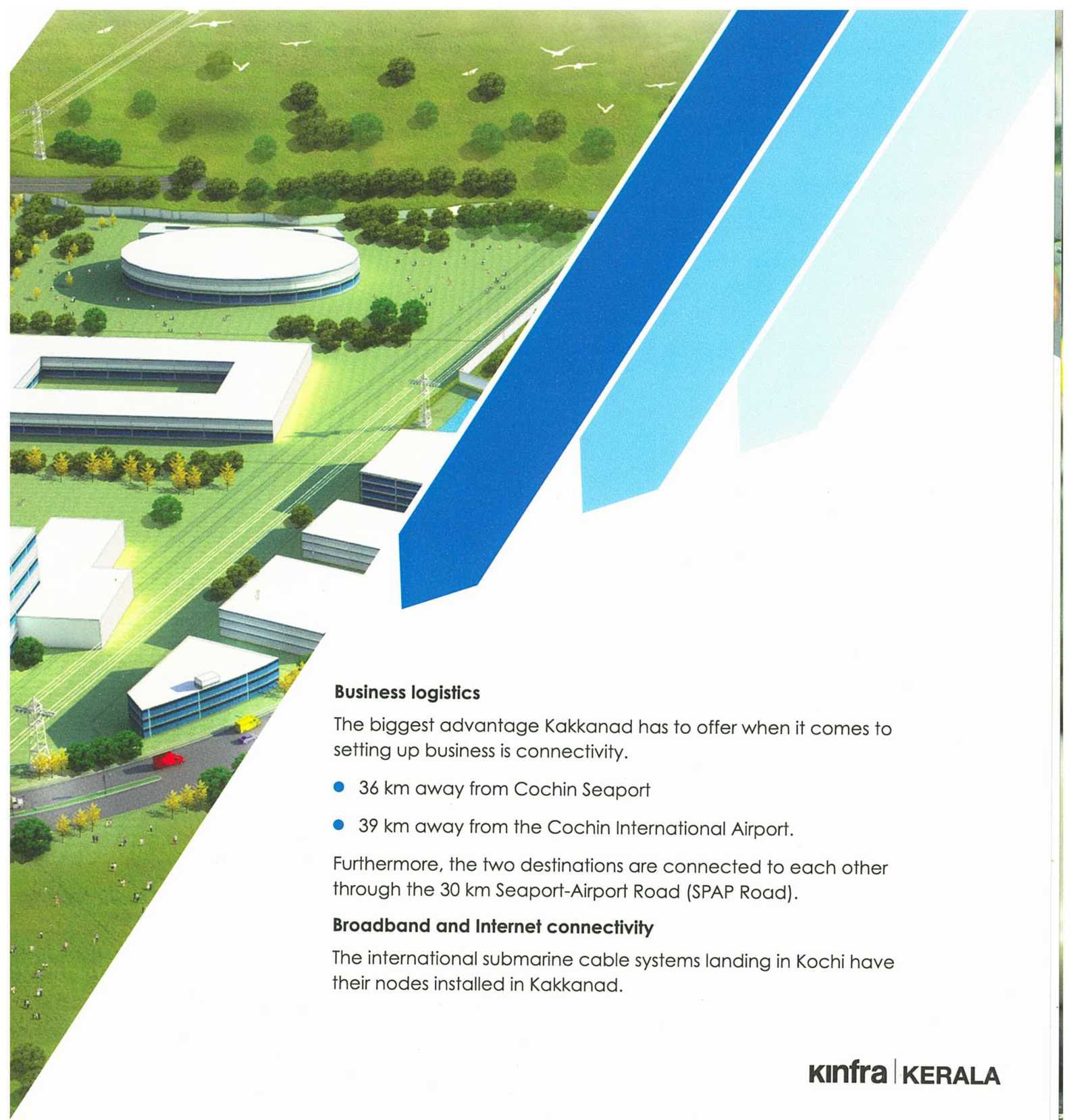
Existing infrastructure

- Kakkanad is home to the KINFRA Export Promotion Park, Cochin Special Economic Zone (CSEZ), Software Export Promotion Zone (SEPZ), Info Park - the second largest IT industrial park in Kerala, and the highly anticipated Smart City - the largest IT industrial township in the state.

Ample human resources

- Easy availability of trained human resources including talented and skilled workforce makes the place a natural choice for setting up electronics manufacturing units. The ample number of engineering colleges in the vicinity also adds to the advantage.





Business logistics

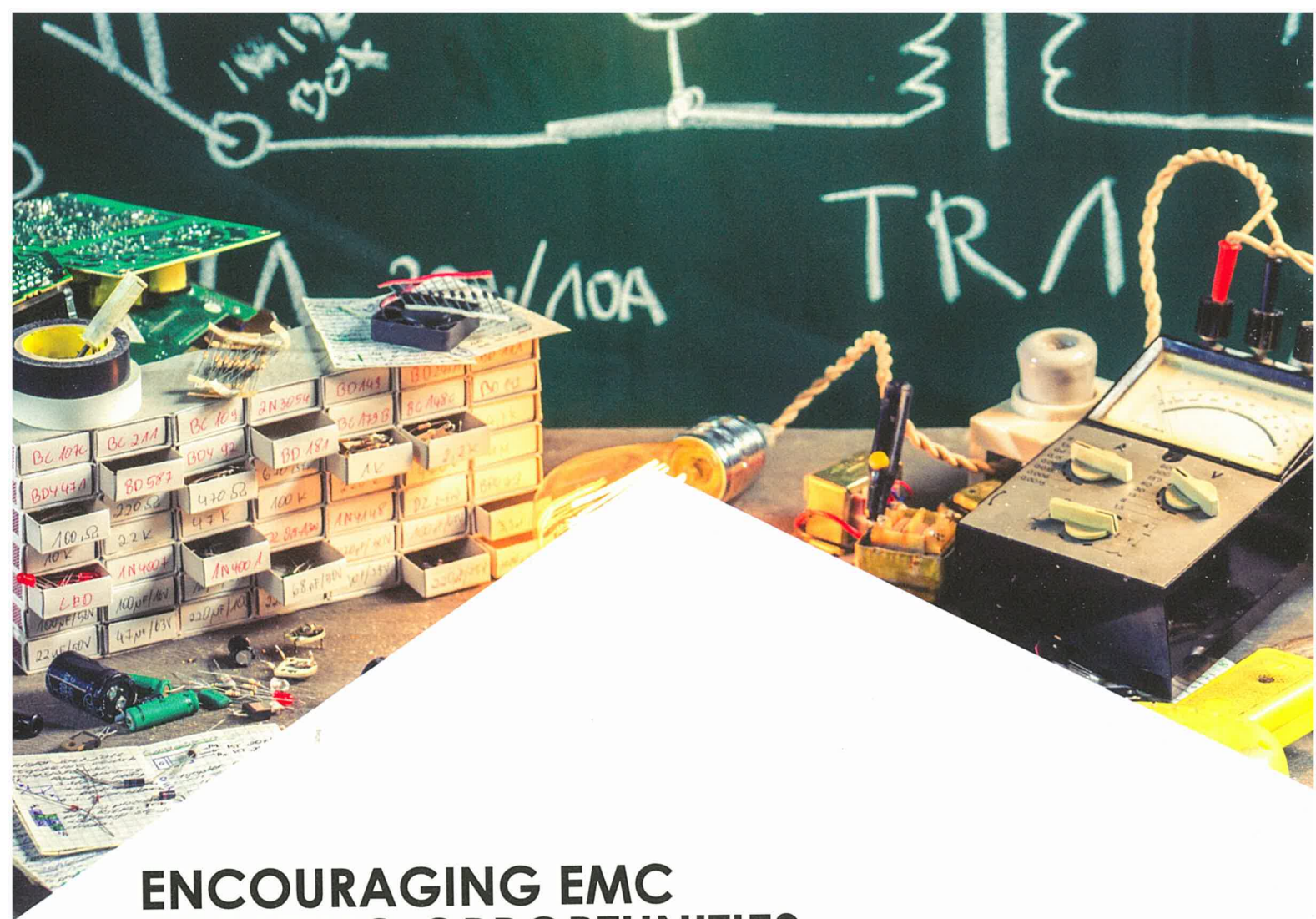
The biggest advantage Kakkanad has to offer when it comes to setting up business is connectivity.

- 36 km away from Cochin Seaport
- 39 km away from the Cochin International Airport.

Furthermore, the two destinations are connected to each other through the 30 km Seaport-Airport Road (SPAP Road).

Broadband and Internet connectivity

The international submarine cable systems landing in Kochi have their nodes installed in Kakkanad.



ENCOURAGING EMC CREATING OPPORTUNITIES

ELECTRONICS MANUFACTURING SCHEME

To promote entrepreneurship, drive innovation and catalyze economic growth, Government of India has initiated an Electronic Manufacturing Scheme for seeking investments in the ESDM sector.



MODIFIED SPECIAL INCENTIVE PACKAGE SCHEME (M-SIPS), GOVT. OF INDIA

- The Government of India is offering an incentive package to attract domestic and global investment into the ESDM sector within EMC
- Subsidy for investment in capital expenditures up to 25%
- Reimbursement of CVD/Excise Duty for capital equipment in non-SEZ units
- Reimbursement of Central Government taxes and duties for 10 years in select high-tech units like semiconductor fabrication and ATMPs
- Incentive available for 10 years from date of approval
- Incentive applicable for entire value chain of 29 categories of identified electronic products including raw material, assembly, testing, packaging and accessories
- Incentive applicable for relocation of units from abroad for state-of-the-art technology

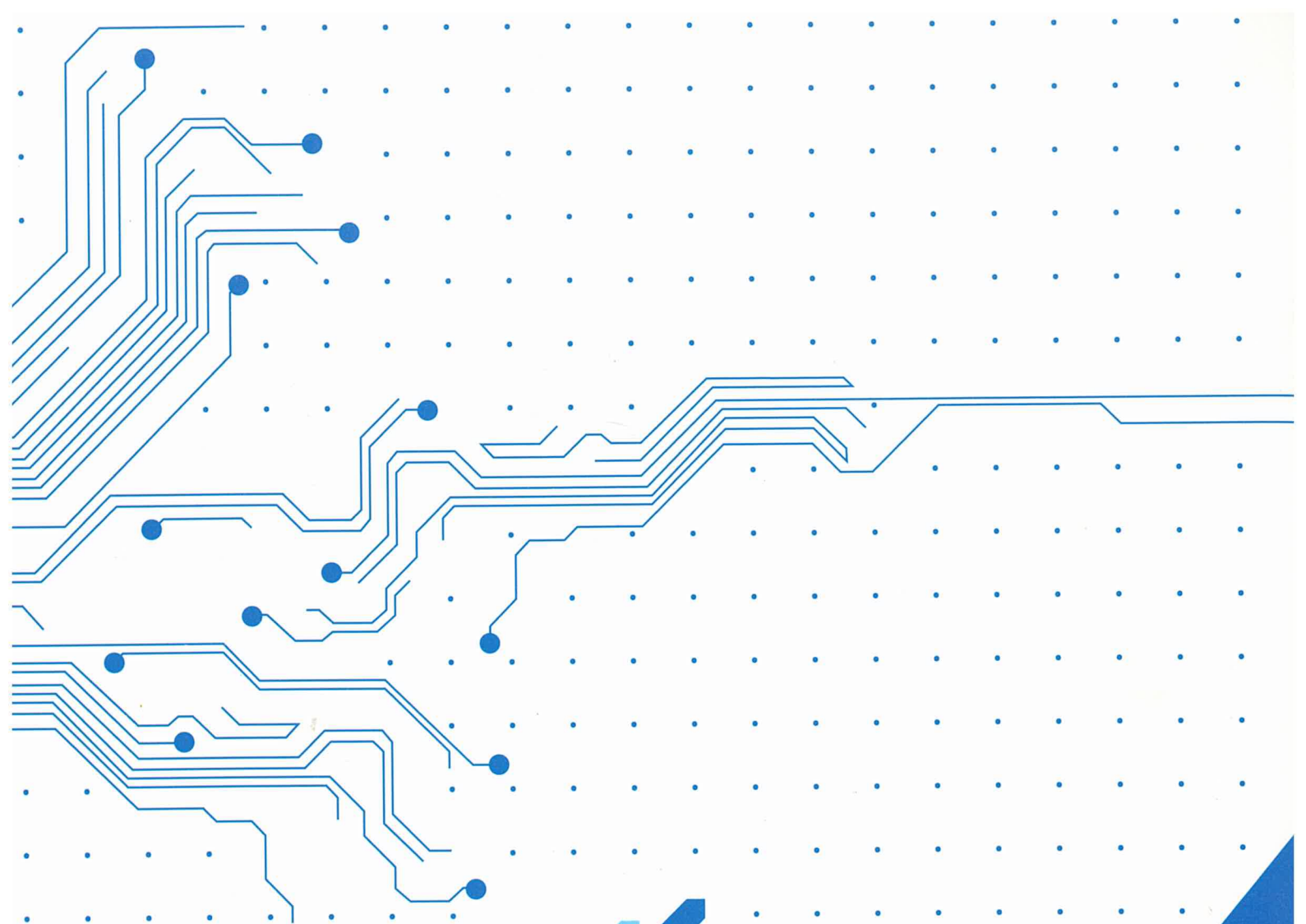


PROMOTING INDUSTRIES DRIVING ECONOMY

KINFRA

Kerala State Industrial Infrastructure Development Corporation (KINFRA) was set up to unleash the industrial potential of Kerala. From apparel and food processing to rubber and seafood, over the years KINFRA has pioneered the 'park' concept in Kerala and has set up 22 industrial parks across the state. KINFRA has helped in kick-starting development, particularly in industrial sectors where the state has an edge by way of natural and human resources. It has created the much necessary impetus to the industrial promotional movement in Kerala.





Kerala Industrial Infrastructure Development Corporation

Kinfra House, Sasthamangalam

Thiruvananthapuram 695 010, Tel: +91 471 2726585

www.kinfra.org, sunilgalp@gmail.com, prkinfra@gmail.com

www.facebook.com/Kinfra.org

