




# DEFENCE PARK

കേരള സർക്കാർ, മുംബൈ സർക്കാർ, കേന്ദ്ര സർക്കാർ, കേരള സർക്കാർ  
കേരള സർക്കാർ, കേന്ദ്ര സർക്കാർ, കേരള സർക്കാർ



 OTTAPALAM, PALAKKAD, KERALA  
 TEL +91 471 2726 585 / FAX +91 471 2724 773  
 [mail@kinfra.org](mailto:mail@kinfra.org)

# KERALA INDUSTRIAL INFRASTRUCTURE DEVELOPMENT CORPORATION (KINFRA)

- Statutory body of the Govt. of Kerala was formed in 1993 by an Act of Legislature.
- Dedicated to catalyse industrial growth in Kerala by providing the robust industry-specific infrastructure.
- 31 well-defined industrial parks in a span of 30 years with specific sectors viz- Apparel/Textile, Food Processing, Defence, Petrochemical, Film & Animation, IT/ITES, Ayurveda, Marine Products, Rubber and General Industries

## VISION

Create a sustainable ecosystem for Industry and Commerce and become the preferred Industrial Infrastructure provider and also to develop Industrial cities with highly skilled work force and latest technology-driven Industrial ecosystem and create strategic economic benefits.

## MISSION

- To become the nodal agency to bring in potential investors
- To create industrial townships and corridors and provide excellent connectivity to boost the economy
- To adopt a 'life-cycle approach' in the design of Infrastructure development projects.

## OBJECTIVE

- Creation of infrastructure that invites precision manufacturing industries with high-value outputs, specifically in the domains of Machinery, Fabricated metal products, Rubber & Plastic products, Food Industries, Textiles, Non-metallic mineral products, Pharma etc.
- Positioning KINFRA as an industrial land bank-facilitator and developing an integrated manufacturing cluster.
- Introducing investor-friendly policies and offerings by inculcating best practices in allotment, lease and sub lease, land-policy strategies.
- KINFRA parks offer comprehensive Infrastructure and support services to the clients.
- Offers Single Window facilities for statutory clearance.
- Online Single Window Interface for Fast & Transparent clearance (SWIFT).



# KINFRA PARKS

- International Apparel Park, Thiruvananthapuram
- Film & Video Park, Thiruvananthapuram
- Film & Video Park, SEZ, Thiruvananthapuram
- Global Ayurveda Village, Thiruvananthapuram
- Small Industries Park, Thiruvananthapuram
- Mini Industrial Park, Mundakkal, Kollam
- Small Industries Park, Piravanthoor, Kollam
- Food Processing Park, Adoor, Pathanamthitta
- KINFRA Small Industries Park, Adoor, Pathanamthitta
- Small Industries Park, Kunnamthanam, Pathanamthitta

## SOUTH

- Export Promotion Industrial Park, Ernakulam
- Electronic Manufacturing Cluster, Ernakulam
- Petrochemical Park, Ernakulam
- Spices Park, Idukki
- Hi-Tech Park, Ernakulam
- Small Industries Park, Ernakulam
- Small Industries Park, Thrissur
- Defence Park, Palakkad
- Mega Food Park, Palakkad
- Integrated Industrial & Textile Park, Palakkad
- Integrated Industrial Park, Palakkad
- Rural Apparel Park, Rajakumari, Idukki

## CENTRAL

- Textile Centre, Kannur
- Small Industries Park, Thalassery, Kannur
- Industrial Park, Kannur
- Techno Industrial Park, (with SEZ), Malappuram
- Food Processing Park, Malappuram
- Neo Space, Malappuram
- Small Industries Park, Kuttippuram, Malappuram
- Small Industries Park, Kasargod
- Small Industries Park, Wayanad

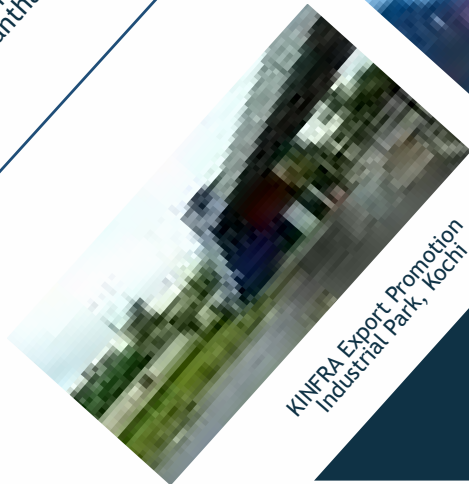
## NORTH

## KINFRA –JOINT VENTURE PROJECTS

1. Rubber Park, Irapuram, Ernakulam (JV with Rubber Board, GOI)
2. Sea Food Park, Aroor, Alappuzha (JV with MIDCON and Sea Food Exporters)
3. Western India KINFRA Ltd, Kanjikode, Palakkad (JV with Kalpaka Infrastructure Pvt Ltd)
4. CaRE Keralam, Thrissur (JV with Ayurveda Mfg. supported by AYUSH Dept, GOI)
5. Kottayam Port Development Corporation (JV with South Indian Indian Chamber of Commerce and Industries & Private Investors)



## KINFRA SUBSIDIARY COMPANIES



## UPCOMING /ONGOING PROJECTS OF KINFRA

- 1.Petrochemical Park, Kochi
- 2.Kochi Bengaluru Industrial Corridor (KBIC), Palakkad & Kochi
- 3.Standard Design factory Phase-II, KFVP, Trivandrum
- 4.Electronic Manufacturing Cluster, Kochi
- 5.Spices Spark (Phase 1), Thodupuzha
- 6.International Exhibition cum Convention Centre, Kakkanad, Kochi
- 7.KINFRA Industrial Park, Mattannur, Kannur
- 8.KINFRA integrated Rice Technology Park, Palakkad & Alappuzha
- 9.Industrial Water Supply, Kochi & Palakkad
- 10.Advanced Technology Park, Ramanattukara, Kozhikode
- 11.KINFRA Mega Food Park (Phase 2), Palakkad
- 12.Mini Food Park Projects in Kerala
- 13.Industrial Facilitation Parks
- 14.Land Bank at Kannur

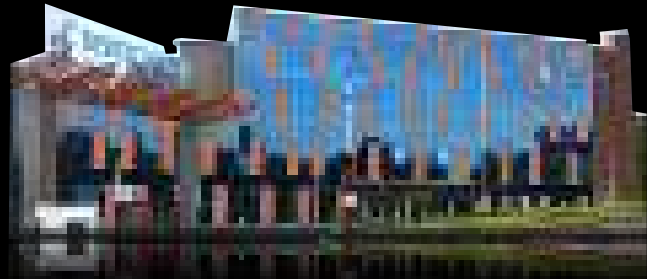


## DEFENCE PARK

KINFRA Defence Park is established at Ottapalam of Palakkad district in Kerala. The project is implemented by the state government with assistance from the Government of India under the Modified Industrial Infrastructure Upgradation scheme. The state government is determined to position the park as a significant centre of competence for world-class defence manufacturing aligned with the 'Make in India' initiative.

The park is envisioned as a hub for multi-prong activities, including manufacturing, R&D testing & certifying etc. It is part of India's effort to become self-reliant in the defence sector and is expected to give a fresh impetus to the development of defence production in the country both for its domestic needs and also for export. The park is supported by talent, technology, innovation, infrastructure and most importantly favourable government policies.

The park is spread over 60 acres of land right on the Palakkad - Ponnani state highway. It will offer industrial land and brick-and-mortar space to set up industrial units. The focus area of the park includes components of rotary and fixed-wing aircraft, defence navigation products, components of tactical vehicles, defence IT systems and solutions, avionics, tactical communication systems, space robotics etc. Allotment of build up space at the park has already been initiated.

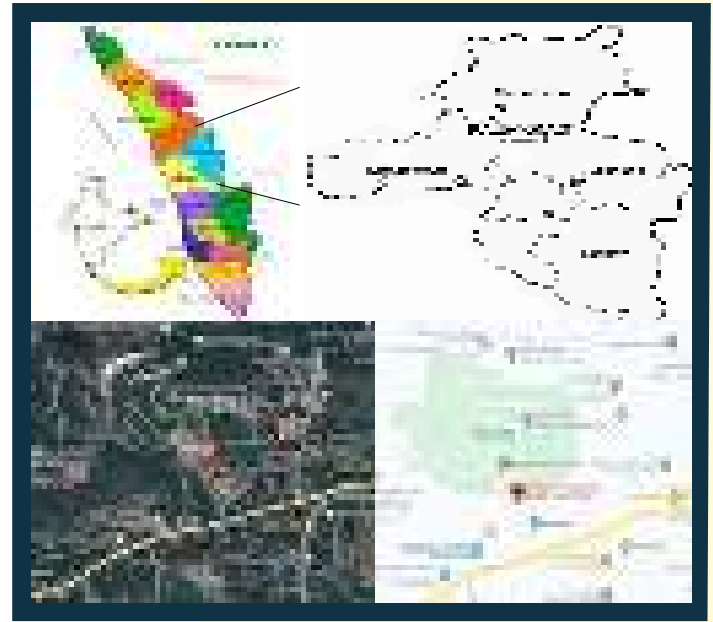


## KERALA

Always a front runner for attracting industrial investments, Kerala had progressed by leaps and bounds in the past few years. Today the state has emerged as one of the potential destinations for industrial ventures. Attributes of the state such as a responsive government, developed infrastructure, connectivity, skilled workforce etc. has catapulted the state to a high growth path, making it one of the best states in India for ease and quality of doing business.

## HIGHLIGHTS

- Efficient & sustainable economy
- Proactive government policies
- Rich natural resources
- Globally competent, skilled manpower
- Educated and progressive citizenry
- Robust startup ecosystem
- Best in law & order
- Fast mover in EoDB ranking



## SWIFT & SIMPLE

Step 1 Submit the application form (Form A) along with the project profile indicating raw materials, process flow diagram, end product and DD of INR 5000 plus applicable GST drawn in favour of KINFRA payable at Trivandrum.

Step 2 Clearance by the district industries land allotment committee.

Step 3 Release of intimation letter (Form B) to the allottee. Allottee to remit 10% of the lease premium as EMD within 30 days.

Step 4 Upon remittance of EMD, an allotment letter (Form D) will be issued. Allottee to remit 50% of the lease premium within 30 days.

Step 5 License agreement with a validity of 24 months (Form E) will be executed with the allottee. Allottee to submit drawings, initiate construction, install machinery and start commercial production within 24 months. Balance lease premium (40%) is to be remitted within 2 Years with interest @ 12.5% p.a.

Step 6 Lease deed (Form F) will be executed for 28 years upon the initiation of commercial production.



## THRUST SECTOR

- Defence manufacturing.
- Defence navigation products.
- Avionics & Naval systems.
- Computer hardware and electronics.
- Tactical communication system.
- Protective clothing and personal equipment.

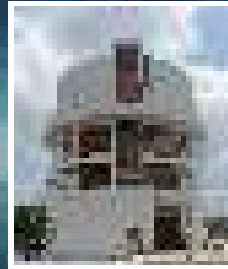


## PROJECT AT A GLANCE

- Total area - 60 acres.
- Location - Ottapalam, Palakkad.
- Total project cost - Rs 130.84 Cr.
- Central assistance - Rs 50 Cr.  
(under Modified Industrial Infrastructure Upgradation (MIU) Scheme.)



OVERHEAD TANK BUILDING



WAREHOUSE

COMMON UTILITY CENTRE



## KEY DELIVERABLES

- Industrial land on lease.
- SDF with a total built-up space of 2,20,000 sq.ft.
- Administrative building of 72,406 sq.ft.
- Warehouse facility of 24,000 sq.ft.
- Common utility centre of 7,000 sq.ft.

## AMENITIES

- Service yard & car parking
- Internal roads & compound wall.
- Conference & training rooms
- Paint booth & tool rooms
- Water & Power

## TERMS

- Lease period is 30 years, extendable up to 90 years for Land.
- Lease period is 10 years, extendable up to 30 years for Buildings.
- In case of cancellation, 10% EMD will be forfeited.



## KINFRA DEFENCE PARK- UNITS AT GLANCE NANO TECH DYNAMICS

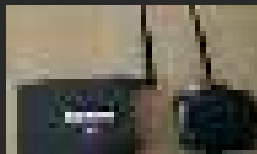
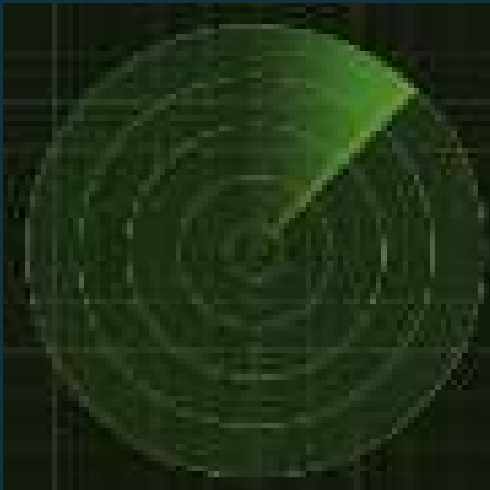
25 years of exposure in the arena of cutting-edge technology aiming to contribute to the manufacturing of ultra-precision components sector. They are experts in all types of CNC controls and machines up to 7 axes. NANO TECH DYNAMICS is the pioneer in Micro components suiting for medical industry biological reactors as well as heavy to very heavy industry supporting ship and submarine manufacturing.



4 Axis VMC make Cosmos



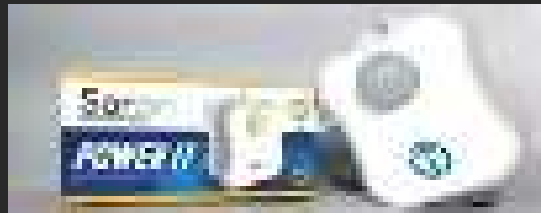
## SARON INNOVATURE LABS LLP



MOTCON V2- Wireless  
Water tank level controller



POWER IT -  
Motion Sensor Switch



POWER IT - Day Night Sensor Switch

They focus on the research, development and manufacturing of products in the Home Automation and IoT sector. Started their incubation at Technical Business Incubator (TBI), Government Engineering College, Sreekrishnapuram, Palakkad. Currently the research and manufacturing facility is located at KINFRA Defence Park.



## FEROMAC TECHNOLOGY PVT LTD

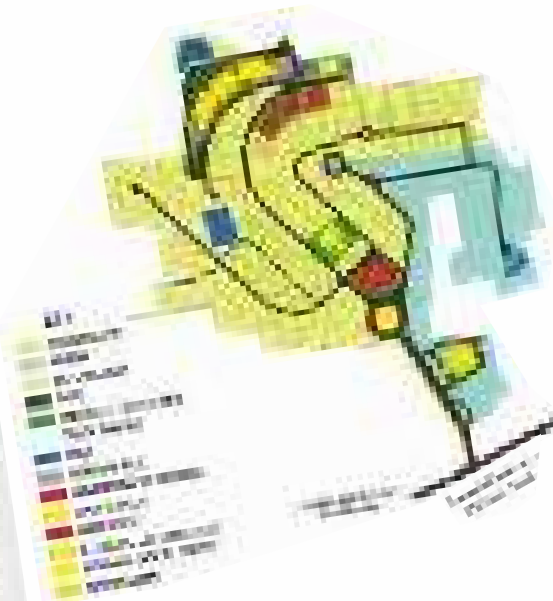
An enterprise which provides engineering solutions to clients from diverse industries such as automotive, Defence organizations, electronics, mining, medical and other commercial manufacturing industries. They deal with precision metal stamping tools, moulds for plastic and metal casting, jigs and fixtures and thereby can provide support with any elements within the supply chain of these items.

## OZAK TECHNOLOGIES

The enterprise has its production facility in the Defence Park at Palakkad. The integral R&D of the company allows us to design, prototype, field test and manufacture Electro-optics products including Thermal Imaging Equipment. In addition to the established product range, they also customise our products to suit individual client's requirements. Their products have been aggressively field tested and its capabilities established.



# DEFENCE PARK AREA LAYOUT



Defence Park Ottapalam

Palakkad

## CONNECTIVITY

Calicut International Airport - 83 Km  
Coimbatore International Airport - 96 Km

Palakkad Railway Station - 28 Km

Palakkad - Shornur State Highway


Vallarpadam International Container Transhipment Terminal, Cochin - 128 Km



## CLIENTELE



## CONTACT

 Kerala Industrial Infrastructure Development Corporation, Sasthamangalam, Trivandrum-695010



Mr. Anesh A.S +91 9446326166



aneesh@kinfra.org



Facebook.com/kinfra.org



www.kinfra.org

